

HYDRATION PRODUCTS



DRINKING FOUNTAINS
BRITA® HYDRATION STATION®



ABOUT HAWS®



GLOBAL CUSTOMERS



GLOBAL VISION



LOCAL SERVICE

Ingenuity is the *Haws* culture.

Every day we work to address your needs and solve your challenges by applying imagination and initiative to make your job easier. *Haws* invents, manufactures and builds drinking fountains as well as standardized and customized emergency response products. With office and distribution locations worldwide, we continually focus on quality, service, reliability and complete solution support.

HAWS: LEAD-FREE PRODUCTS SINCE 1990



Reduction of Lead in Drinking Water Act, an amendment to the *Safe Drinking Water Act*, establishes a maximum lead content of wetted surfaces of plumbing products to a weighted average of 0.25%. With an effective date of January 4, 2014, this law necessitates all potable plumbing products sold and installed meet the new lead reduction requirement.

All Haws drinking fountain products are lead-free, as well as several AXION® Emergency Tempering Valves. These Haws products have NSF/ANSI 61-section 8 or section 9 and NSF/ANSI 372 certifications, obtained through the internationally recognized CSA Testing Laboratory, and are AB1953 compliant.

HOW DID THE LEAD-FREE DEFINITION CHANGE?

Lead-free means not containing more than 0.2% lead when used with respect to solder and flux; and not more than a weighted average of 0.25% lead when used with respect to the wetted surfaces of pipes, pipe fittings, plumbing fittings, and fixtures.

WHAT PRODUCTS ARE INCLUDED?

Pipes, pipe fittings, plumbing fittings and fixtures that may provide water for human consumption. This includes devices that are typically integrated into a faucet or plumbing system that deliver drinking water.

HOW DOES THE LAW APPLY TO REPAIRS AND REPLACEMENT PARTS?

Pipes, fittings or fixtures that were installed prior to the effective date and are being repaired do not need to meet the new definition of lead-free because the pieces are not being "introduced into commerce" but any replacement parts must be the lead-free definition.

BRITA® HYDRATION STATION®



THE ORIGINAL HYDRATION STATION® WITH CERTIFIED BRITA® FILTERED WATER

Offering recessed and surface-mounted versions, the wall-mounted Brita® Hydration Station® is ideal for applications with high traffic. Both wall-mounted units include a filter replacement indicator light for the Lifecycle Control filter. The front panel LED filter indicator light changes color to denote filter life status.

RECESSED – MODEL 2000S

The perfect solution for permanent installations, Model 2000S installs directly into your wall and offers a plumbed drain.

In addition, Model 2000S meets the requirements of the American with Disabilities Act when mounted at the correct height.

SURFACE MOUNT – MODEL 2000SMS

The surface-mount installs onto any wall surface without major infrastructure changes.

Both wall-mounted Brita® Hydration Stations® are tested and certified by CSA against NSF/ANSI Standard 42 for the reduction of chlorine (taste and odor) and against NSF/ANSI Standard 53 for the reduction of lead and 99.9% cysts*, NSF/ANSI Standard 61, Section 9, NSF/ANSI 372, CSA Standard B483.1, and California Health and Safety Code 116875 (AB 1953).

The BRITA trademark and logo are registered trademarks of Brita LP and are used under license by Haws Corporation®. All rights reserved.



Model **2000S**



Model **2000SMS**



BRITA® HYDRATION STATION® PRODUCT COMPARISON

FEATURES	2000S	2000SMS
FILTER LIFE	2,500 Gallons, Lifecycle Control	2,500 Gallons, Lifecycle Control
ACTIVATION	Touch-Free Sensor	Touch-Free Sensor
SELF-CLEANING	Purge Feature	Purge Option
EXTERIOR	Stainless Steel, ABS Plastic	Stainless Steel, ABS Plastic
FLOW RATE	.5 GPM (1.9 LPM)	.5 GPM (1.9 LPM)
WATER RESERVOIR	Plumbed	Plumbed
WATER TEMPERATURE	Chiller Optional	Chiller Optional
FILTER INDICATOR LIGHT	✓	✓
DIMENSIONS (external)	15" W x 3.9" D x 30.25" H 38.1 cm x 9.9 cm x 76.84 cm	15" W x 6.9" D x 30.25" H 38.1 cm x 17.53 cm x 76.84 cm
WATER DISPENSING AREA	5" W x 2" D x 11.5" H 12.7 cm x 5.08 cm x 29.21 cm	5" W x 2" D x 11.5" H 12.7 cm x 5.08 cm x 29.21 cm
INSTALLATION	Into Wall	Onto Wall
WARRANTY	3-year	3-year
ADA COMPLIANT	✓	✓ ⁺
VOLTAGE	115v	115v



⁺When installed at the proper height



FEATURES & BENEFITS

- 100% lead-free waterways
- 18-gauge, Type 304 stainless steel bowl with 14-gauge bracket
- Polished, chrome-plated brass vandal-resistant bubbler and push button
- Laminar flow which produces a more even flow and eliminates splashing
- Barrier free for full ADA access
- Front access stream adjustment, cartridge and strainer
- Swirl bowl design channels water to ensure proper drainage
- Vandal-resistant components and bottom plates
- Pre-built fountains are pressure tested to ensure proper functionality



Model **1011HPS**

A Hi-Lo, barrier-free stainless steel fountain with round sculpted bowls. Optional cane skirt also available, as shown.

WALL MOUNTED :: ARCHITECTURAL



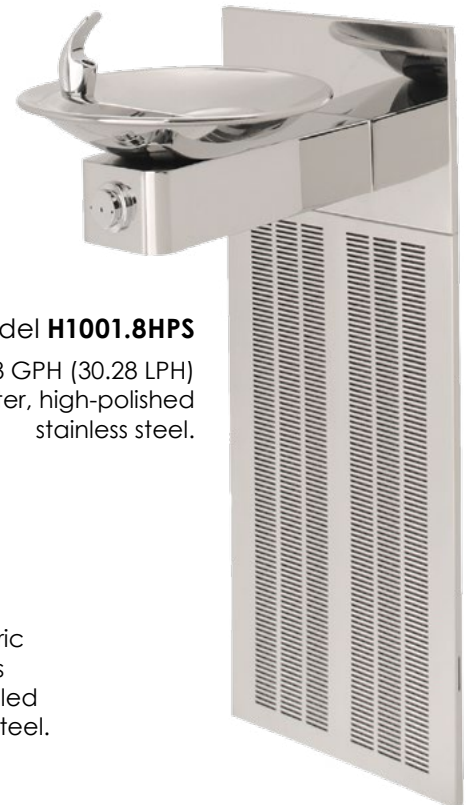
Model **1001MS**

Barrier-free, satin finish stainless steel drinking fountain with sculpted bowl, back panel and in-the-wall mounting system, and 100% lead-free waterways.



Model **H1001.8HPS**

Provides 8 GPH (30.28 LPH) chilled water, high-polished stainless steel.



Model **H1011.8HO**

Hands off, Hi-Lo electric water cooler provides 8 GPH (30.28 LPH) chilled water, satin stainless steel.



FEATURES & BENEFITS

- 100% lead-free waterways
- Polished, chrome-plated brass bubbler, push button and waste strainer
- Barrier free
- Front access stream adjustment, cartridge and strainer
- Vandal-resistant components
- Pre-built and fully pressure tested
- Integral waste trap

Model **H1117.8**

14-gauge, adjustable barrier-free, Hi-Lo electric water cooler with adult and child ADA capabilities.

WALL MOUNTED :: INSTITUTIONAL



Model 1109.14BP

Heavy-duty, barrier-free, 14-gauge, Type 304 stainless steel construction and specialized integral mounting plate offer even more protection with a sturdier design. Satin finish resists stains and corrosion.



Model 1431

Two-bubbler, enameled iron, barrier-free fountain provides for bullet-proof durability. Bubbler heads locked to main bowl prevent against vandals and provide efficient water flow for twice the users as single-bubbler fountains.



Model 1900

Bottle filler is easily mounted over virtually any drinking fountain or water cooler.

Stainless steel, push-button activated valve assembly allows for front access stream adjustment as well as cartridge and strainer access. Patent pending flexible design allows for outward drain to be reversed inward allowing drain water to be connected to waste inside of wall. *Model shown mounted over drinking fountain Model 1109.*

Model H1119.8

Hi-Lo electric water cooler provides 8 GPH (30.28 LPH) chilled water, stainless steel skin.

Features vandal-resistant bubbler heads, waste strainers and bottom plates. Grille slots are designed to eliminate sharp edges and are backed with a foam filter to protect the fan motor and high displacement compressor from debris.





FEATURES & BENEFITS

- 100% lead-free waterways
- Polished, chrome-plated brass bubbler, push button and waste strainer
- Barrier free
- Front access stream adjustment, cartridge and strainer
- Vandal-resistant components and bottom plates
- Integral waste trap
- Pre-built and fully pressure tested

Model **1047**

Wall-mounted design with child ADA capabilities. Air-entrained concrete with exposed aggregate finish for enhanced durability. Hood extension protects the bubbler head with a partial enclosure for a greater protected drinking point.

WALL MOUNTED :: OUTDOOR



Model 1025

Barrier-free, heavy-duty 11-gauge fabricated galvanized steel, with green powder-coated finish. Top-down drain access allows for cleaning without taking unit apart. Welded heavy-duty bubbler guard protects the drinking point from misuse.

AVAILABLE IN CUSTOM COLORS

Model 1501

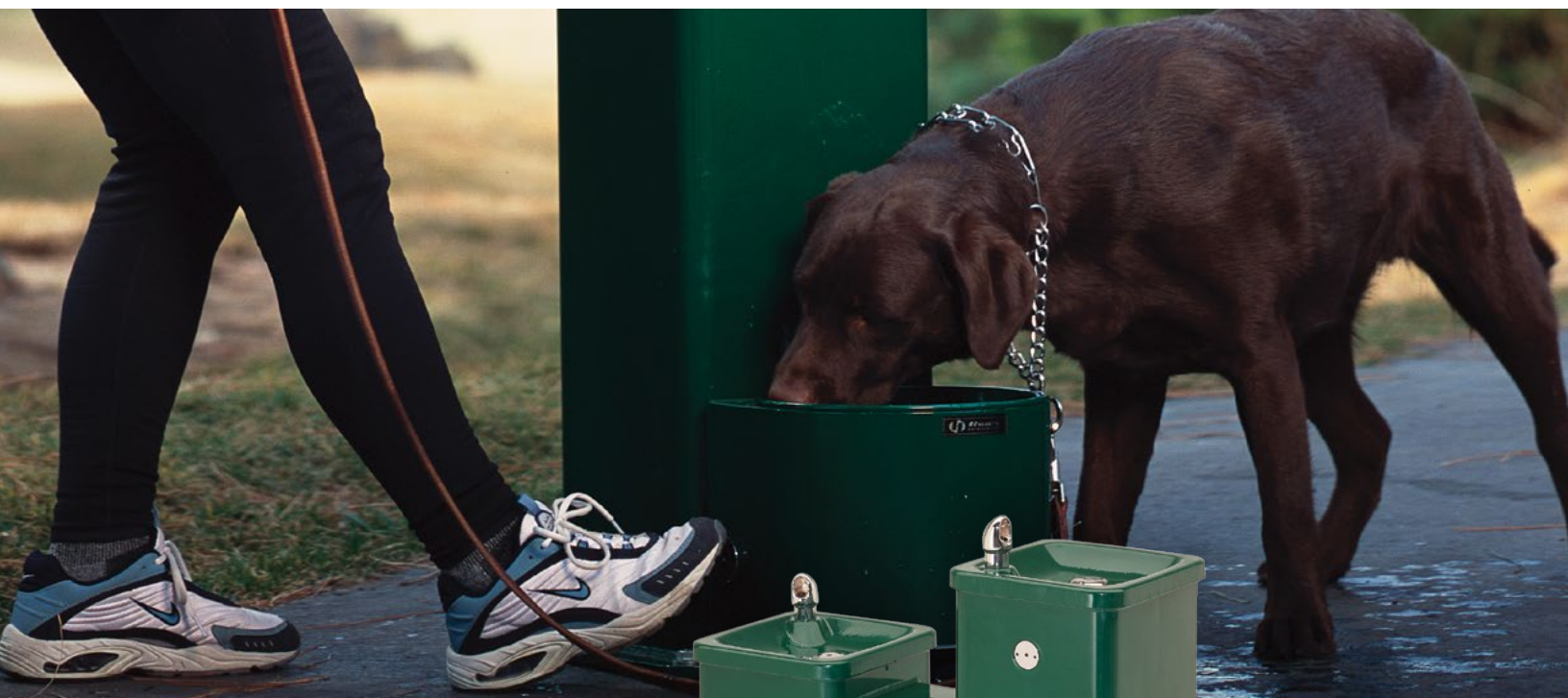
Barrier-free, Hi-Lo, wall-mounted design with white enameled iron construction. Soft rounded corners prevent mishaps and other accidents that may occur once installed. Matching back panel provides a better base for a sturdier fountain.



Model 1409

Multi-bubbler, barrier-free, white powder-coated cast aluminum construction. Gloss finish resists stains keeping the fountain protected. Three bubbler heads locked to main bowl prevent against vandals and provide efficient water flow in high traffic areas.





FEATURES & BENEFITS

- Barrier free
- Front access stream adjustment, cartridge and strainer
- Vandal-resistant components
- Chrome-plated brass bubbler, push button and waste strainer
- Esthetically pleasing and protective powder-coated surfaces
- Heavy-duty stainless steel construction



Model **3500D**

Heavy-duty, 12-gauge stainless steel construction. Hi-Lo, barrier-free design provides for twice the users as regular drinking fountains. Ground level dog fountain allows for pet owners to easily supply their animal with a cool flowing stream of water. Green powder-coat paint finish is standard with nine other powder-coat colors available at an additional cost.

PEDESTAL



Model 3380

Heavy-duty, 11-gauge, fabricated galvanized steel with powder-coated finish provides exceptional corrosion resistance in one of our toughest made fountains. Standard color is green.

AVAILABLE IN CUSTOM COLORS



Model 3511

"Antique style" pedestal made of heavy-duty, cast aluminum with powder-coated finish makes for one of the most stylish fountains that Haws produces. Standard color is black.

AVAILABLE IN CUSTOM COLORS



Model 3300

Hi-Lo, barrier-free design. Ready for any environment with heavy-duty, 11-gauge construction, bubbler guards and recessed push buttons.

AVAILABLE IN CUSTOM COLORS



Model 3202

Angled barrier-free, trough-style design allows the pedestal to be placed securely in multiple locations where a gravel fill is present or can be installed. Gravel fill and trough design completely eliminate the need for traditional drains that can be clogged with sand and other contaminants.

AVAILABLE IN CUSTOM COLORS

Custom Color Selections



BRONZE MIST

GREEN

YELLOW

RED

BLUE

SILVER

BLACK

WHITE

BROWN

ORANGE



FEATURES & BENEFITS

- Heavy-duty, air-entrained concrete construction ensures strength and freeze-thaw durability, exposed aggregate finish
- Front access stream adjustment, cartridge and strainer
- Vandal-resistant components including recessed push buttons
- Polished, chrome-plated brass bubbler, push button and waste strainer
- Oversize access panels for ease of maintenance
- Attractive, high-polished stainless steel basins
- Top-down access to the drain allows the fountain to be cleaned without taking the unit apart
- Freeze-resistant options

Model **3150**

Adjustable design allows the arm to be mounted at adult or child height as required by ADA. Hood extension protects the bubbler head with a partial enclosure for a greater protected drinking point.

CONCRETE PEDESTAL



Model 3121

Square concrete design with exposed aggregate finish. Hood extension protects the bubbler head for a greater protected drinking point.



Model 3177

Angled barrier-free design with hood extension that protects the bubbler head with a partial enclosure for a greater protected drinking point.



Model 6518FR

Freeze-resistant valve system. Fully-engineered pneumatic-operated valve for use on all Haws single bubbler pedestal fountains. System is installed below the frost line.



Model 6620

Square concrete step that matches the color and finish of Haws' concrete drinking fountains to allow children access to the drinking water stream. Air-entrained concrete square step, 10" (25.4 cm) high for surface mounting. Anchor bolts supplied.



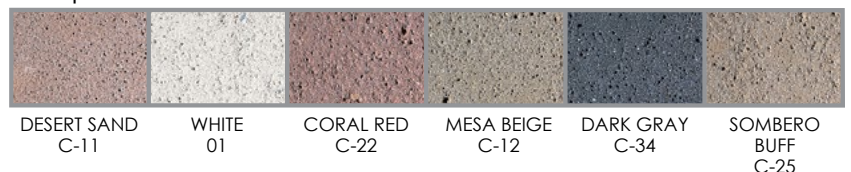
Four Concrete Finishes



Easy to Order

- Go to www.hawsc.com
- Choose the model
- Select one of the four concrete finishes
- Select the concrete color

Sample of Concrete Colors



To view all concrete color options, go to www.hawsc.com



Model **4110ADA**

Barrier-free capabilities when mounted at appropriate height. Recessed sink design with water tight fit and stainless steel mounting rim (not shown) helps to minimize excess splashing. Heavy-duty, cast iron basin with a glossy white acid-resisting enamel finish. Pre-punched to accept two valves and/or faucets. Model shown with optional components.

SINK :: COUNTER-TOP MOUNTED



Model 4010

Ideal for sink or counter-top locations. Push button operated with adjustable stream regulation. Equipped with mounting bracket and waste strainer. Stainless steel bowl and bubbler. Anti-squirt flow prevents surging water, keeping the drinking area contained and clean.



Model 4230

Barrier-free, stainless steel, counter-mounted sink, 31" x 19" x 5" (78.7 cm x 48.3 cm x 12.7 cm) deep. Sunken down sink design helps to minimize excess splashing and self-rimming feature allows for easy mounting, while the stainless steel construction provides durability and corrosion resistance. The satin finish resists stains and corrosion. Water-tight fittings along with sound deadening underneath keep this unit mounted securely on any counter-top. Model shown with optional components.



Model 5054LF

Shielded bubbler and self-closing lever handle valve with pressure regulating flow control to provide an anti-squirt drinking stream. Unit is to be mounted from a sink or counter-top and is constructed from lead-free polished chrome-plated brass, making it resistant to corrosive materials.



Model 5452LF

Gooseneck faucet is designed with a .5 GPM (1.89 LPM) flow control and self-closing lever handle action. Unit is to be mounted from sink or counter-top and is constructed from lead-free polished chrome-plated brass, making this faucet resistant to corrosive materials.

COLORS :: FINISHES

DRINKING FOUNTAIN MODELS

OPTIONAL ACCESSORIES		1001	1001BP	1011MS	1025	1047	1109.14	1117L	1409	1431	1501	2000S-2000SMS	3121	3150	3177	3202	3300	3380	3500D	3511	H1011.8HPS	H1119.8
	6250LF																					
	6429																					
	6426																					
	6603																					
	6611																					
	6620																					
	6635																					
	6700																					
	6715																					
	6800																					
	BP6																					
	HCR8																					
	MTG.3501																					
	MTGFR.DF2																					
	MTGFR.LG																					
	SK1																					
	SK3																					
	Concrete Colors																					
	Custom Colors																					

COLOR CODES

- Orange indicates a **REQUIRED** Accessory
- Gray indicates an **OPTIONAL** Accessory

ACCESSORIES



Model 5551

Push lever operated, self-closing, polished chrome-plated brass, deck-mounted, gooseneck cold water glass-filler faucet.



Model 6250LF

Self-closing, plain end, lead-free, brass bib faucet with polished chrome-plated finish.



Model 6252EHLF

Self-closing, plain end, bib faucet with rough brass finish and a special extended lever handle which is locked to valve.



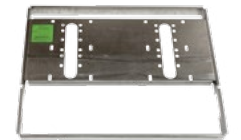
Model 6429

Replacement filter for the Brita® Hydration Station® sensor-operated bottle filling station.
(U.S. and Canada only)



Model MTG.3501

Galvanized steel anchors.



Model MTGFR.DF2

In-wall mounting frame provides maximum support and facilitates the installation of 1011MS and 1011HPSMS series fountains.



Model 6426

Filter, 12" x 2" (30.5 cm x 5 cm), in-line lead removal element that reduces lead from incoming water supply.



Model 6603

Satin finish stainless steel access panel. Includes frame and screws.



Model 6611

Sand trap for installing adjacent to pedestal drinking fountains to help prevent debris and contaminants from clogging waste line.



Model 6620

Matching square air-entrained concrete step for square concrete pedestals, 10" (25.4 cm) high.



Model 6635

In-pedestal sand trap for models 3500 and 3511.



Model MTGFR.LG

In-wall mounting frame provides the maximum support and facilitates the installation of Hi-Lo, electric water coolers.



Model SK1

Satin finish stainless steel cone touch skirt for installation on high unit to comply with ADA protruding objects guidelines.



Model 6700

Universal mounting plate for most single bubbler wall mounted fountains.



Model 6715

In-wall mounting plate provides the maximum support and facilitates the installation of Hi-Lo, barrier-free, 1501 series fountains.



Model 6800

Universal in-wall mounting support for use with most fountains.



Model BP6

Back panel that increases location visibility of fountain and helps protect wall from inadvertent splash. Model BP6 is 15" x 9" (38 cm x 22.9 cm) stainless steel with a satin finish. Used on model 1001.



Model HCR8

Chiller provides for instantaneous cooling to meet a continuous demand for chilled water.



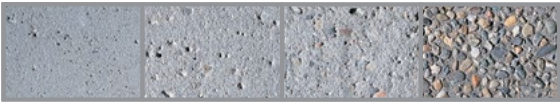
Model SK3

Satin finish stainless steel cone touch skirt for installation on high unit to comply with ADA protruding objects guidelines.

COLORS :: FINISHES

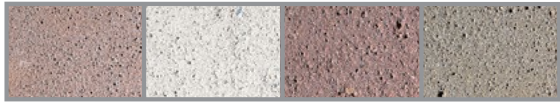
CONCRETE

Four Concrete Finishes

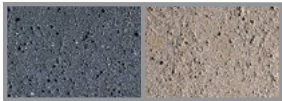


LIGHT
SANDBLAST MEDIUM
SANDBLAST HEAVY
SANDBLAST EXPOSED
AGGREGATE

Sample of Concrete Color Options



DESERT SAND
C-11 WHITE
01 CORAL RED
C-22 MESA BEIGE
C-12



DARK GRAY
C-34 SOMBERO
BUFF
C-25

POWDER-COATED STEEL

Custom Color Selections



SILVER BLACK WHITE BROWN ORANGE



BRONZE MIST GREEN YELLOW RED BLUE

SINK MODELS

OPTIONAL ACCESSORIES

	4010	4110ADA	4210	4230
5010.6427SS	●	●	●	
5017LF	●	●	●	
5051LF	●	●	●	
5054LF	●	●	●	
5452LF	●	●	●	
5510LF	●	●	●	
5530LF	●	●	●	
6426	●			
6455		●	●	●
HCR8	●			



Model **5010.6427SS**
A polished stainless steel push-button bubbler valve for countertop or sink mounting.



Model **5017LF**
All polished chrome-plated sink or counter-mounted drinking faucet with renewable control cartridge.



Model **5051LF**
Polished chrome-plated lever handle deck or sink-mounted bubbler valve.

COLOR CODES

- Orange indicates a **REQUIRED** Accessory
- Gray indicates an **OPTIONAL** Accessory



Model **5054LF**
Self-closing lever handle, polished chrome-plated brass deck-mounted drinking faucet with automatic stream regulation.



Model **5452LF**
Self-closing lever handle, polished chrome-plated brass gooseneck faucet.



Model **5510LF**
Stay-open lever handle, polished chrome-plated brass gooseneck faucet.



Model **5530LF**
Stay-open hot-and-cold lever handled chrome-plated brass gooseneck faucet.



Model **6426**
Filter, 12" x 2" (30.5 cm x 5 cm), in-line lead removal element that reduces lead from incoming water supply.



Model **6455**
Polished chrome-plated brass flat waste strainer.



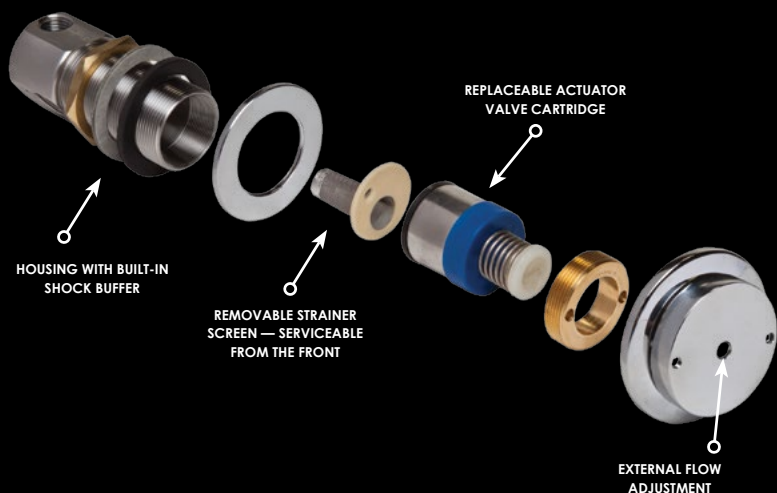
Model **HCR8**
Chiller provides for instantaneous cooling to meet a continuous demand for chilled water.

5874 :: PUSH BUTTON ACTUATION VALVE

All components meet NSF61

The stainless steel, push-button activation valve is designed with an integral buffer mechanism housing that cushions the effects of sudden pressure changes. The actuation valve is entirely lead-free and ideal for any drinking fountain application. It is standard equipment on all non-freeze-resistant Haws drinking fountains and it can be retrofitted into existing non-freeze-resistant drinking fountains. The valve not only eliminates "Water Hammer," but also the need for separate in-line buffers that can leak or crack.

For ease of maintenance, the push-button design allows for front access stream adjustment as well as cartridge and strainer access. With a sediment screen built into the valve housing, behind the actuator cartridge and button, removal of the actuator cartridge and screen from the front of the installed fountain for cleanout or cartridge replacement is easy with minimal tools required.



AB1953

AB1953 is encompassed in the California Assembly Bill 1953, enacted in September of 2006, which calls for a reduction in lead content in all plumbing equipment including pipes, fittings, and fixtures to a level less than 0.25%. This law went into effect on the first day of January 2010 and all the aforementioned products sold and installed on and after that date must meet this AB1953 lead reduction requirement. In 1990, Haws was already manufacturing products that fall within the lead reduction requirement that is now in effect.

All Haws drinking fountain products are lead-free, AB1953 compliant, and have NSF/ANSI 61-section 8 or section 9 and NSF/ANSI 372 certifications, obtained through the internationally recognized CSA Testing Laboratory.

CERTIFICATIONS

The CSA and UL certification marks signify that the product meets applicable U.S. and Canadian standards, including those from CSA, ANSI, ASME, ASSE, ASTM, NSF and UL.

Below is a list of certifications that Haws' drinking fountain models and optional accessories have been tested and certified to use. Certifications for each model can be found in the model descriptions at www.hawscos.com.

CSA: Canadian Standard Association International



UL: Underwriters Laboratories



ASSE: American Society of Sanitary Engineering



Water Quality Association: NSF/ANSI 61, ANNEX G, AB 1953



Wheel Chair Accessible products

SPOTLIGHT ON :: SCHOOLS

Model **7620**
AXION® eyePOD®

Model **2000S**
Brita® Hydration Station®

Model **3500D**
Pedestal Drinking Fountain

Model **H117.8**
Wall-Mounted Water Cooler

Model **1409**
Wall-Mounted Drinking Fountain

EMERGENCY PRODUCT SPOTLIGHTS



Model 7620

The AXION® eyePOD® is a faucet-mounted, thermostatically-controlled eyewash that provides facilities with advanced AXION® MSR eyewash capabilities in an attractive, low profile, low cost design. With a single motion, your standard faucet becomes an AXION - *Medically Superior Response*® eyewash, and with another rotation it resets as a faucet.

Model 7261-7271

Pedestal unit, includes the AXION MSR eye/face wash head. Zero vertical velocity stream engineering with even laminar flow. Features a round 11" (28 cm) green ABS plastic receptor and 1-1/4" (3.18 cm) galvanized stanchion. Also available with a stainless steel bowl (Model 7361-7461).



Model 7656WCSM

Wheelchair accessible, surface-mounted, pull-down eye/face wash with AXION MSR eye/face wash head in a stainless steel cabinet, perfect for mounting on block or solid walls which cannot be cut into. Made of 18-gauge Type 304 stainless steel, the recessed cabinet is a deep-drawn, heavy-duty structure with smudge resistant, bead-blast finish. The eye/face wash head is easily activated by the emergency equipment's pull-down design and has an easy access exterior mounted in-line strainer.

Model 8300-8309

Combination shower includes the AXION MSR eye/face wash head assembly, and AXION hydrodynamic showerhead design. Zero vertical velocity stream engineering with even laminar flow. Features a round 11" (28 cm) Type 304 stainless steel bowl. Stainless steel push flag and pull rod, mesh in-line eyewash strainer and ball valves with stainless steel ball and stem. Pipe and fitting: 1-1/4" (3.18 cm). Schedule 40 hot-dipped galvanized steel.



Hydrate For Health

US/Canada

Haws HQ • www.hawscs.com • +1.888.640.4297

Mexico/Central America

Haws HQ • www.hawscs.com • +1.775.359.4712

South America

Haws Avlis • www.hawsavlis.com.br • +55.11.4813.9977

Asia Pacific

Haws Singapore • www.haws.sg • +65.6367.0359

Europe/Middle East/Africa

Haws Switzerland • www.haws.ch • +41 (0) 34.420.6000

